

# KleeBlue™

Your Total DEF Storage & Dispensing Equipment Solution



## Retail Fueling Island-Friendly Mini-Bulk Systems

400 & 1000 gallon



# KlerBlue Retail Fueling Island-Friendly Systems

## 400 & 1000 Gallon Mini-Bulk Turn-Key Solutions

Since 2010 EPA NOx standards came into effect, more and more vehicles on the road are requiring DEF. Are you ready to service this growing market? KlerBlue offers several systems tailored to c-stores, truck stops, rental companies and other retailers depending on storage and dispensing capacity needed. Of those, KlerBlue's turn-key 400 & 1000 gallon mini-bulk systems are the quickest and simplest to install so you can begin selling DEF right away.

KlerBlue's all-in-one Retail Fueling Island-Friendly systems really stand out from other similar systems in the marketplace. Because DEF freezes at 12°F, it requires special heating & insulation considerations to ensure you can continue to service customers in the most extreme environments.

### Service Customers Even In Extreme Cold

Since DEF requirements have come into effect, KlerBlue's systems have proven to be the industry's most reliable, even during the harshest winters.

- Each system features 2 heaters controlled by an automatic thermostat- a primary and a backup in case of heating failure.
- R16 industrial-grade insulation on sides, bottom and top of tank is not only easier on the heaters, it ensures that even in the event of a power failure DEF will stay in liquid form for days. This means when power comes back on, you're ready to go. It also protects against extreme heat.

### Integrate Into Your Existing Operations

Don't spend extra money trying to make your DEF solution work with your current site infrastructure.

- Each KlerBlue mini-bulk system is engineered to fit on a standard fueling island.
- The included KlerBlue Apex retail dispenser is designed to emulate standard dispenser protocols and work with all major site controllers and POS systems.
- Optionally, the tank can operate remotely and/or with a 3rd party dispenser.





## Protect Your Investment & Against Leaks

Thanks to our 25+ history in the PEI industry, we understand the beating your equipment can take between day-to-day wear and tear, weather, and customer abuse. That's why our equipment was engineered to withstand the most challenging environments.

- The tank design features mechanical overflow protection.
- Secondary containment design ensures even in the event of a leak, the liquid will stay between the inner and outer walls.
- The tough HDLPE polyethylene outer double wall is UV protected, corrosion proof, and impact resistant.
- The visual tank level gauge provides display of tank level to prevent volume issues.
- Lockable ball valve in a lockable fill access compartment protects against possible DEF theft.

## Start Selling DEF Quickly

Want to start selling DEF right away?

- Each system comes flushed, pre-wired, and ready to install.
- An anchor kit is included to help secure the unit to the ground.
- The tank includes indentations to allow a fork lift to put the unit in place or moved around the site as DEF demand grows.

## Optional Features

Need something other than the standard system? Consider these options.

- Place aluminum composite material panels on the sides to apply advertising graphics to inform customers of your DEF availability.
- Replace standard tank gauge with a 3rd party aboveground tank gauge including (but not limited to) Veeder Root, Incon and Centuron.
- Swap out the standard blue tank color for tan color (1000 gallon unit only).
- And more! Call for details.



All KleeBlue's Fueling-Island Friendly Systems include an attached KleeBlue Apex dispenser.

To learn more about this product, ask your sales rep for a brochure, or find information online at [www.kleebluesolutions.com](http://www.kleebluesolutions.com).

# Need larger capacity than 1000 gallons?

Check out our 2000/2600 gallon and bulk tank solutions for retailers.

[www.KleerBlueSolutions.com](http://www.KleerBlueSolutions.com)

## Product Specifications



### Standards & Approvals:

- ISO 22241 - 3 & 4
- PEI RP1100
- CSA Listed - C22.2, U/L 508, ANSI/UL Std. No. 50
- Patent Pending



### Operating Temperature:

- -22°F/-30°C to 130°F/54°C



### Size & Dimensions:

- Fueling island friendly widths
- **400 gallon:** 38" width x 190" length x 68" height
- **1000 gallon:** 44" width x 190" length x 106" height
- Dimensions reflect standard lane-oriented affixed KleerBlue Apex dispenser



### Tank Containment:

- Triple wall containment
- Single wall polyethylene primary tank
- **Double wall HDLPE polyethylene containment shell:** UVB protected, corrosion proof and maintenance free
- True 400 & 1000 gallon capacities



### Insulation & Heating:

- Redundant heating
- R16 industrial-grade insulation on sides, bottom and top of tank
- **400 gallon:** 200 watt tank pad heaters
- **1000 gallon:** 450 watt immersion heaters
- Automatic thermostat



### Electronics:

- Three (3) 20 amp 115V AC circuits required
- Local digital readout tank gauge mounted weatherproof/corrosion proof enclosure displaying product volume and temperature
- Dispenser specifications can be found in respective dispenser brochure



### Pump:

- Submersible pump or optional manifolded submersible pumps
- No priming required
- Rated for 400,000 start/stop cycles
- Up to 18 GPM (recommended max per dispenser is 10 gpm)



### Security/Accident Prevention:

- Lockable fill access compartment
- 2" fill port with stainless locking valve located in sealed fill box
- Mechanical overfill prevention
- Electronics located outside of tank enclosure to eliminate vapor related problems
- Impact resistant outer tank & triple wall secondary containment
- Primary and secondary tank vents
- Dial thermometer in the fill access compartment for monitoring tank temperature
- **Option:** High & low temperature & product alarms
- **Option:** 3rd party aboveground tank gauge including (but not limited to) Veeder Root, Incon and Centuron



### Fill Inlets:

- 2" with ball valve and check valve
- Optional 2" stainless steel drybreak (Parker, OPW or TODO)
- Heated and insulated inlet plumbing



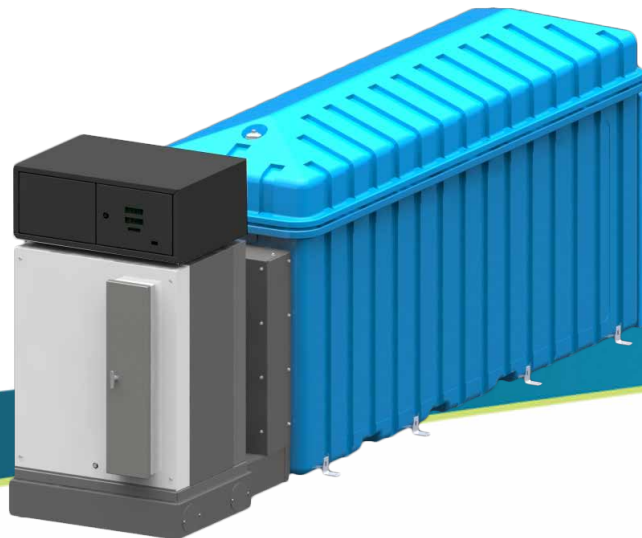
### Dispenser:

- KleerBlue Apex (as shown) comes standard
- Lane orientation is standard, Island orientation is optional
- **Option:** KleerBlue Apex (remote)
- **Option:** 3rd Party dispenser(s) (attached or remote)



### Installation:

- Forklift compatible
- Pressure-tested before shipment
- Completely pre-piped and wired
- Anchor kit



# KleerBlue™